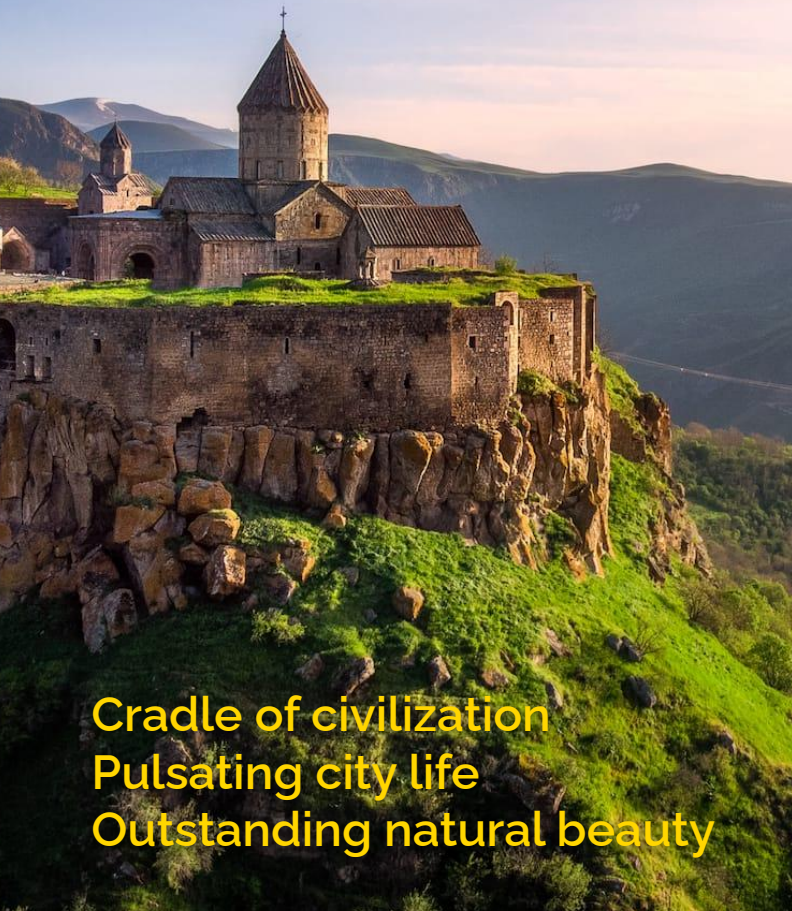


7690 edition

# Visit Vittmark



**Cradle of civilization  
Pulsating city life  
Outstanding natural beauty**



The history of Östervallen goes back nearly 3000 years and spans from the Orkanan Realm, the Union of Skara, the Stoldavic Empire, the Free Town of the Av Kulla royal family towards its present role as the capital of the modern federal monarchy of Vittmark.

Experience ages of cultural history yourself, starting with the active archaeological site of Heligas, where the remains of the ancient capital Skiöldavik of the Orkanan Realm of Stoldavia, are meticulously revealed. Now you can walk on the same streets as Exemplars like Arnold, Bea and Fagra did!

## *Your days of the week are from Vittmark*



# Östervallen: Cradle of civilization



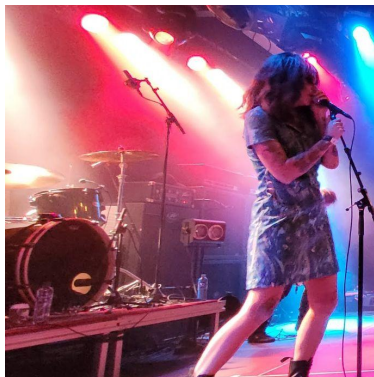
The Royal Palace on Lövön and the “New Town” date from the imperial age, when Östervallen was the focal point of an administration covering half of Anaria. Even today, the living cultural history is still functioning as seat of parliament, for several federal departments as well as the central gathering for Mellanhand Orkanan, the Trossamfundsala. All of these can be experienced from one central square on Lövön!

As an open and tolerant city, the Vallbo of Östervallen will welcome you with an open heart and mind, inviting you to feel the vibrant history and join the local global community, even for a short moment!





**The pulse  
of city life**



The cities of Vittmark offer life and activities day and night. During the summer season, people will venture outside and gather at bustling places like Blåkers Torg in Talpá (pictured to the right) or Ástundahamn in Östervallen (pictured to the left). Wintertime it's the indoors that attracts, with fine dining at restaurants, beer tasting at a tally house bar or a concert in one of the many live houses.



With Vittmark's countless contributions to global popular music, why not experience the musical talent that is thriving on local stages? World renowned acts like *Skägget*, *NÁVA NIVA* or *Kopplingen* show up at medium sized venues all over the country. Or discover the next *Berättelsen* or Sabi Lind before they become big at a small club in Östervallen, Talpá or Hinnárum.

Smaller, historical cities have their own pulse, like Nabben as a quaint fishing port, Vinsta with its artisan culture or pre-imperial Skara. Don't forget Källbyholm with its Hallisian heritage in the former port concession. All easily accessible only a train ride away.

A large natural history museum like Gårdarna or the botanical gardens in any city are worth a day's visit as well.





# Outstanding natural beauty



The variation in Vittmark's natural scenery can be enjoyed from many vantage points. But why not engulf yourself into the beauty of the balance between climate, landscape, natural wildlife and careful preservation? Engaging a trunkbull in the wild or at the Gäddedevida visitor center will certainly be a highlight for any visitor, something that only can be done here..





Gäddedevida is also the starting point (or finish) of the pilgrim's path Moa's Trail, connecting the untouched wilderness of the Blue Mountains with century old recluses for several Orkanan clergies high up in the mountain valleys.

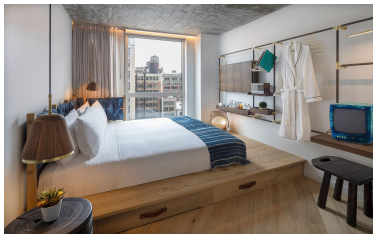


But Vittmark offers so much more, like astonishing coastlines, pristine lakes, a living countryside for horseback riding, or why not go cycling through the hills of Adalen, Liden or Austland?

# Practical Vittmark:



Vittmark is located on the north coast of Stoldavia. A ferry to Helreich or United Hundreds and train ride north will be an enjoyable part of your journey. For air travel, the new Queen Anna International Airport outside Östervallen is a usual point of entry, but Talpá en Hagneå-Hinnárum have international airports as well.



Stay at some of the affordable, welcoming hotels with their timeless interiors. Many Orkanan congregations in Halland have their own chains, like Astur, Mortens and Royal Folke. Or experience Vittmarker hospitality at a bed & breakfast.



Vittmark has a comfortable rail network, with the Blue Mountains Railways connecting the coast to the Stoldavian mountainous heartland, and the east-west Stambanan connecting all the state capitals with high speed trains. Regular coach services reach even the most remote parts of the country.

Most destinations in cities are at walking distance, but it's easy to use local public transport with single tickets sold at stations and vending machines, or using the stamp cards for 15 or 30 rides.

© 7689 Destination Vittmark  
Fortress Lane 32 - 10401 Eldon  
tel 01 6934 7204 fax: 01 6934 7200  
electronic: [enquiry@destinationvittmark!hal](mailto:enquiry@destinationvittmark!hal)